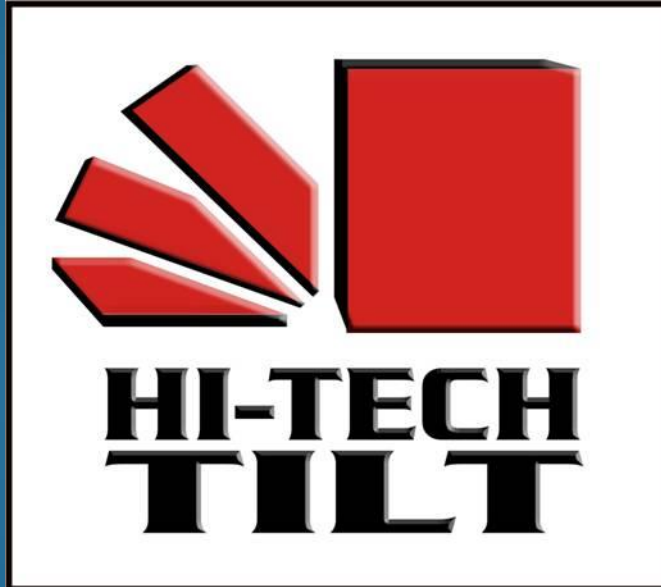


# HI-TECH TILT WALL SYSTEM SOLUTIONS



Spring 2008

# Multi-Story Construction

- Insulated Cladding Panels
- 37 PSF in Standard Concrete
- 25 PSF in Lt. Wt. Concrete



# Rapid Quality Construction

- 4 Story Climate Control Storage
- 110 Days into Construction
- 60 Day Reduction - \$12 Mil interim
- 25% Reduction in A/C
- Owner ordered 3 more Buildings





# Shaped Load Bearing Walls



- Ready to Receive Roof Trusses
- Slab to Roof in 1 to 2 Weeks on a Small Building
- Ready for Plumbing & Conduit

# Versatile Design Options



# Office, Distribution, Education





# Common Sense Construction



- Structural Studs w/ Patented Tabs delivered by panel
- Slab Forms from 2x4, not larger 2x's
- WWM reinforcing mats tied to studs &  $\frac{3}{4}$ " chairs
- 2" Thick Concrete
- Thickened Block-outs @ Lift & Brace Hardware
- Vibrate and Float Concrete
- 24-48 Hours to Lift

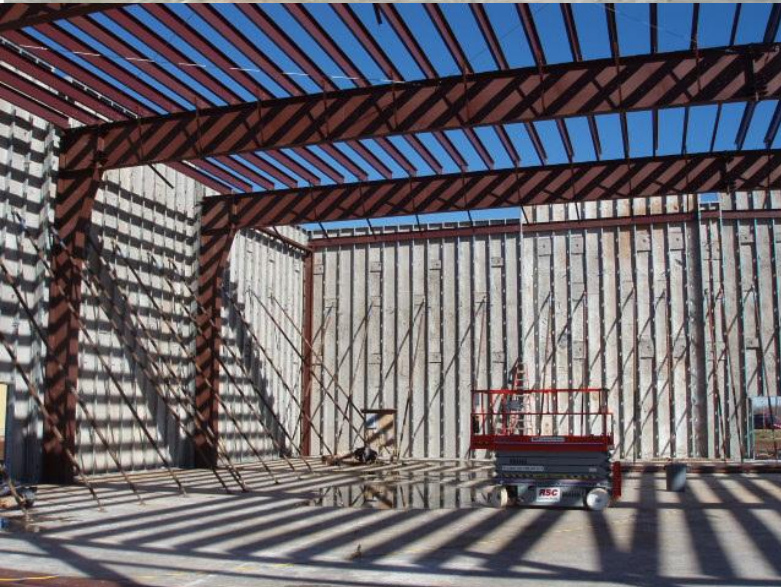




# Reduce Project Time



- Combine Panel & Structure Erection
- Load Bearing & Non Load Bearing Walls
- More Trades on Project Faster





# Benefits

## **Material & Equipment Reduction**

- 66% less Concrete than Tilt
- Smaller Form Material
- Reinforcing Steel & Hardware
- Dead Load – Foundation
- Lighter Crane
- Interior Drywall Framing

## **Labor Reduction**

- Forming, Reinforcing, Material Handling
- Lifting, Setting, Bracing
- Drywall Time & Labor
- Combine w/ Structure Erection

## **Project Benefits**

- Accelerate Subcontractors
- Collapse Time Frames
- Reduce Interim Financing

## **LEED Contributions**

- Reduced Site Disturbance
- Optimize Energy Performance
- Commissioning Systems
- Recycled & Regional Content in Materials
- Relocatable Wall Panels
- Environmental Quality
- Reduce Fuel & Emissions

# Load Bearing Details



- Continuous Ledger Angle bolted to “HTT” Studs



- Joist Bearing
- Purlin Bearing
- Roof Deck Bearing
- Rigid Insulation Board
- Radiant Barrier



# Bearing Elevations



- Combined Structural Systems
- Joist Elev. – bolted CEE
- Deck Elev. – bolted CEE

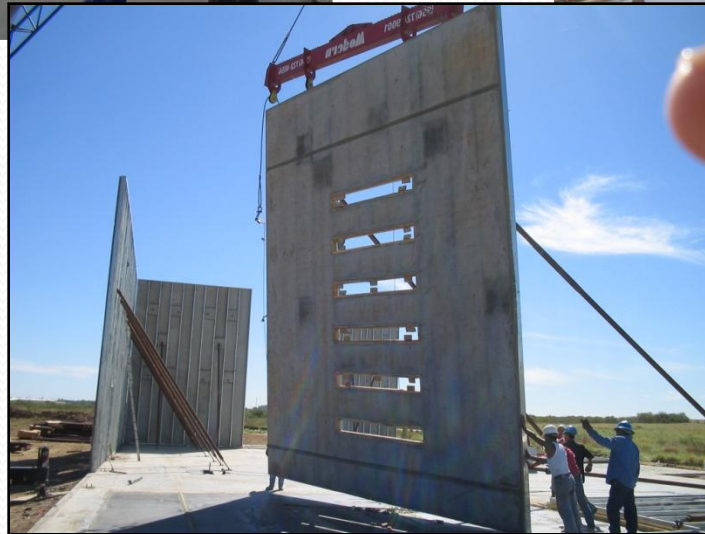


# Wall Protection

- Insulated Warehouse Walls
- Forklift Protection
- 4' Formed Concrete Pour
- Insulation & Finish Above

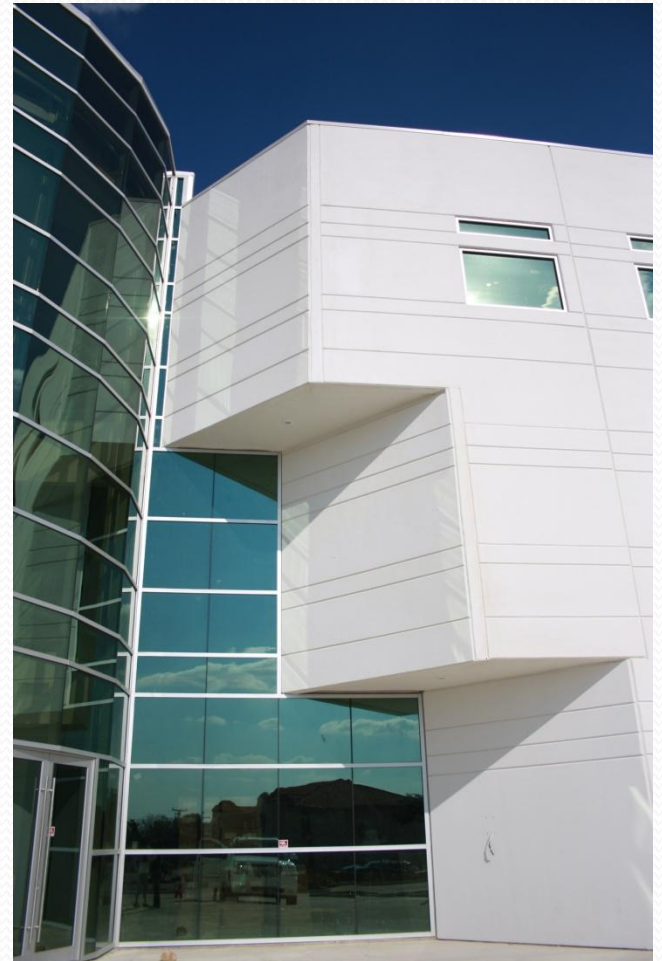
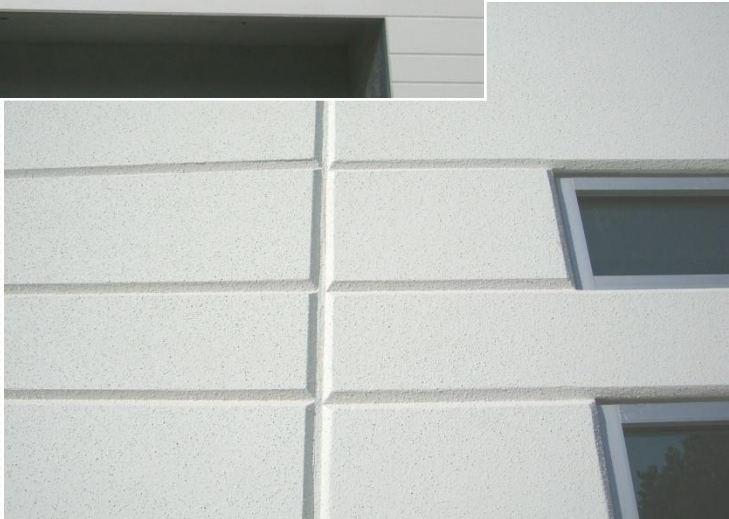


# Reduce Weight, Time & Labor





# Attention to Detail





# Architectural Flexibility

